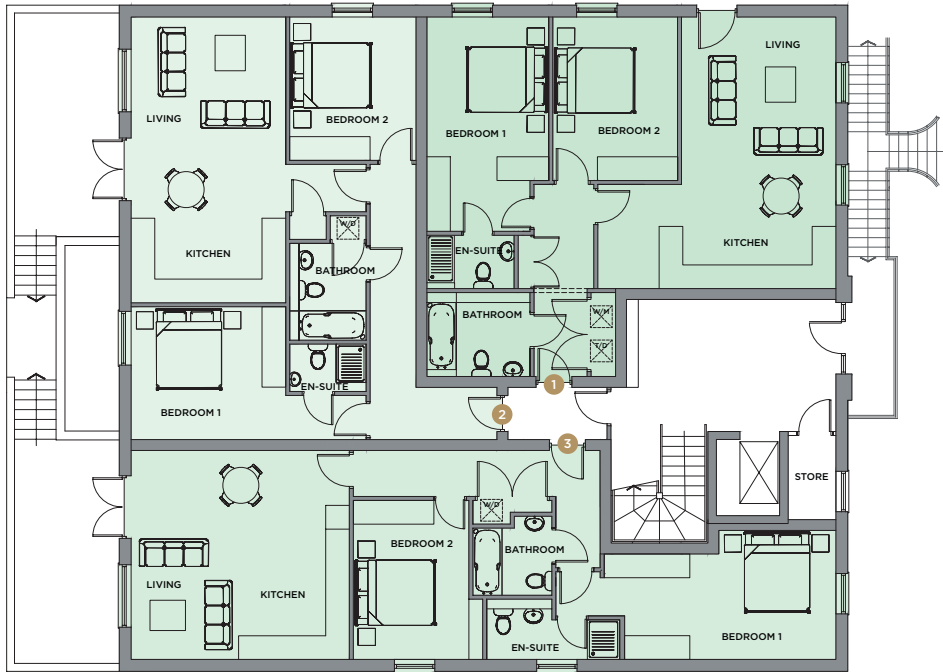




ST. GEORGE'S
HEIGHTS

ESHER • KT10 9DW

GROUND FLOOR - APARTMENTS 1, 2 & 3



APARTMENT 1 - 84sq.m.

Living / Dining / Kitchen	6.88m x 3.91m	33sq.m.
Bedroom 1 (exc. en-suite)	5.43m x 3.09m	18sq.m.
Bedroom 2	4.15m x 3.17m	13sq.m.

APARTMENT 2 - 80sq.m.

Living / Dining / Kitchen	7.80m x 4.10m	32sq.m.
Bedroom 1 (exc. en-suite)	5.95m x 3.37m	20sq.m.
Bedroom 2	3.63m x 3.20m	13sq.m.

APARTMENT 3 - 82sq.m.

Living / Dining / Kitchen	5.60m x 5.30m	30sq.m.
Bedroom 1 (exc. en-suite)	7.09m x 3.27m	18sq.m.
Bedroom 2	4.03m x 2.93m	13sq.m.

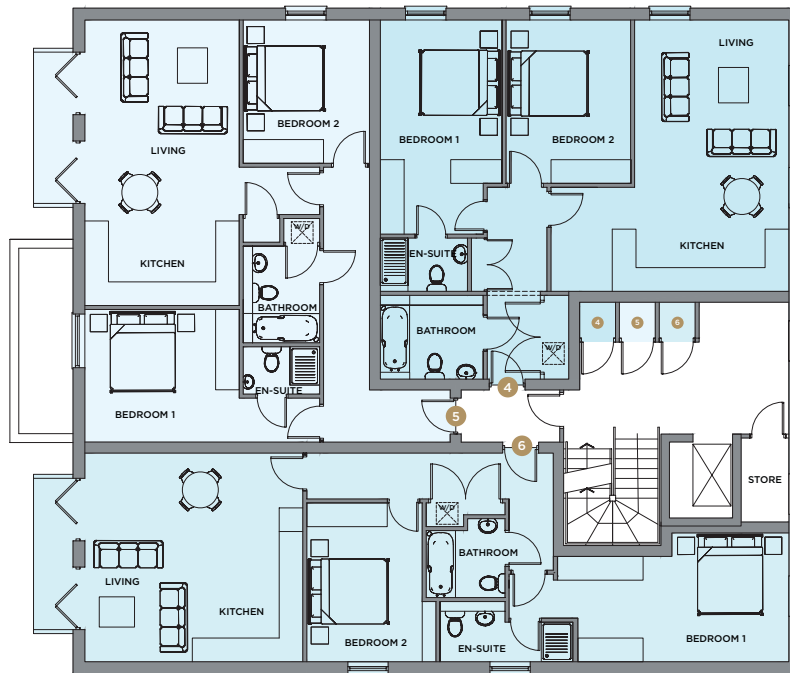
Room sizes shown are measured from wall to wall. Whilst the dimensions given are accurate, they are not intended to be used for carpet sizes, appliance sizes or items of furniture and are for guidance only. Furnishing layouts are for guidance only. Kitchen layouts are subject to amendment. Please ask for details.



ST. GEORGE'S
HEIGHTS

ESHER • KT10 9DW

FIRST FLOOR - APARTMENTS 4, 5 & 6



APARTMENT 1 - 84sq.m.

Living / Dining / Kitchen	6.88m x 3.91m	33sq.m.
Bedroom 1 (exc. en-suite)	5.43m x 3.09m	18sq.m.
Bedroom 2	4.15m x 3.17m	13sq.m.

APARTMENT 5 - 80sq.m.

Living / Dining / Kitchen	7.80m x 5.10m	32sq.m.
Bedroom 1 (exc. en-suite)	5.95m x 3.37m	20sq.m.
Bedroom 2	3.63m x 3.20m	13sq.m.

APARTMENT 6 - 82sq.m.

Living / Dining / Kitchen	5.60m x 5.30m	30sq.m.
Bedroom 1 (exc. en-suite)	7.09m x 3.27m	18sq.m.
Bedroom 2	4.03m x 2.93m	13sq.m.

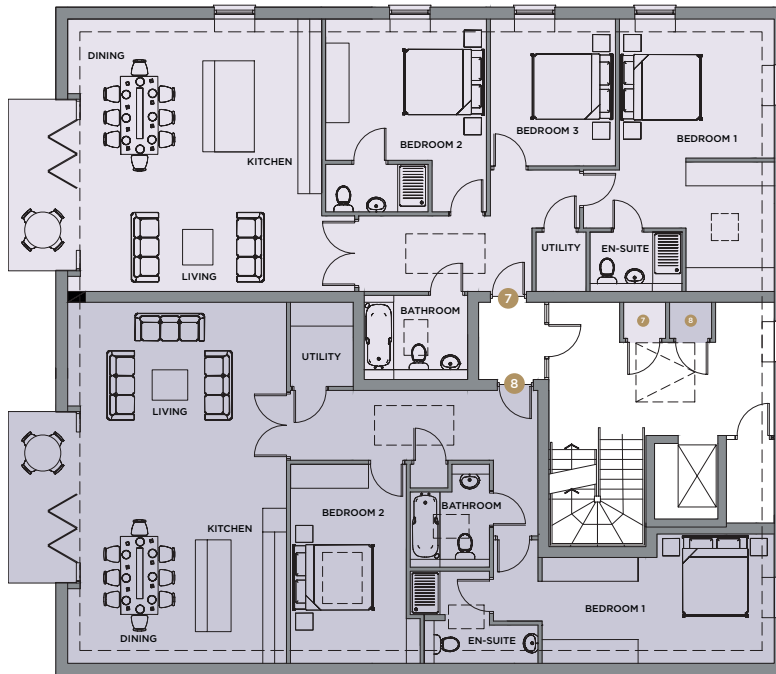
Room sizes shown are measured from wall to wall. Whilst the dimensions given are accurate, they are not intended to be used for carpet sizes, appliance sizes or items of furniture and are for guidance only. Furnishing layouts are for guidance only. Kitchen layouts are subject to amendment. Please ask for details.



ST. GEORGE'S
HEIGHTS

ESHER • KT10 9DW

SECOND FLOOR - APARTMENTS 7 & 8



APARTMENT 7 - 132sq.m.

Living / Dining / Kitchen	6.88m x 6.42m	44sq.m.
Bedroom 1 (exc. en-suite)	6.88m x 3.91m	27sq.m.
Bedroom 2	4.87m x 4.06m	20sq.m.
Bedroom 3	3.71m x 3.16m	12sq.m.

APARTMENT 8 - 109sq.m.

Living / Dining / Kitchen	9.12m x 5.53m	50sq.m.
Bedroom 1 (exc. en-suite)	7.09m x 3.27m	23sq.m.
Bedroom 2	5.03m x 2.93m	15sq.m.

Room sizes shown are measured from wall to wall. Dotted lines denote sloping ceiling with restricted head height. Whilst the dimensions given are accurate, they are not intended to be used for carpet sizes, appliance sizes or items of furniture and are for guidance only. Furnishing layouts are for guidance only. Kitchen layouts are subject to amendment. Please ask for details.